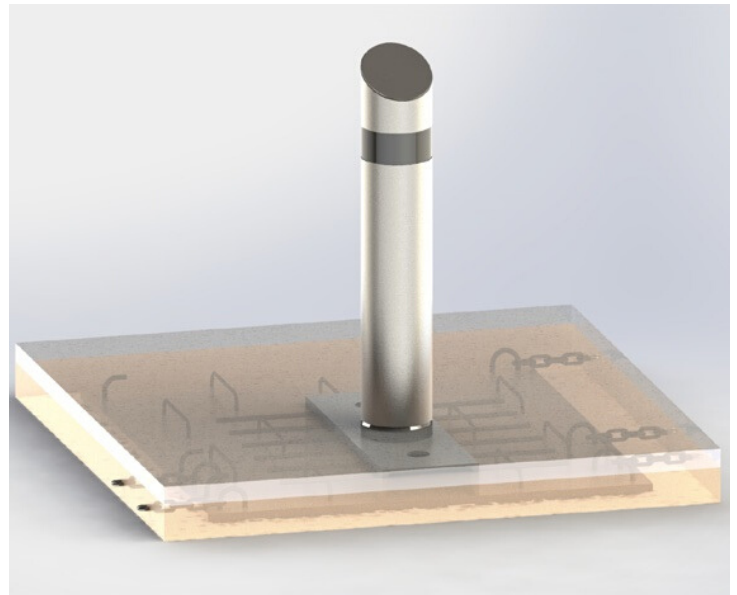




## PAS68 STATIC BOLLARD - CR840SH

The CR840SH is an ultra shallow foundation static bollard tested with the N2 7,500kg vehicle at 64kph. This bollard requires a foundation depth of just 125mm meaning you can easily avoid all ground based services. The unique and simple nature used to connect the bollards means that it can be installed in cambers and gradients. The CR840SH will protect any key facility from a vehicular based attack (refer to Technical Specifications).

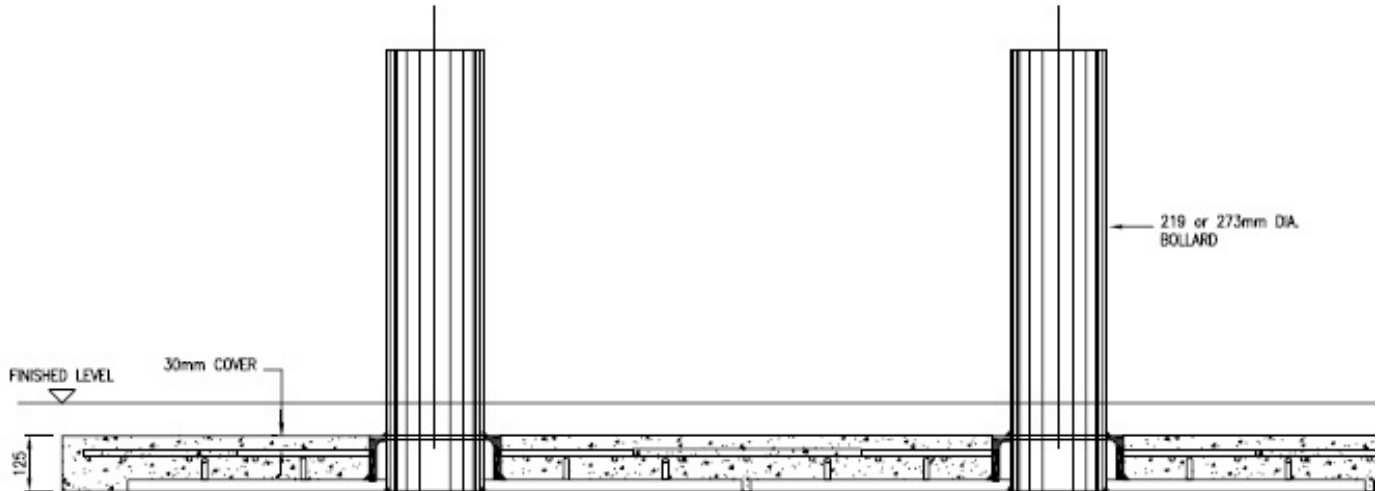


### Technical Specifications

- PAS68: V7500[N2]/64/90:4.7/9.2
- Bollard tested with N2 7,500kg vehicle at 64kmh
- Diameter: 273mm
- Height: 1000mm above FFL
- Foundation: 125mm, plus allowance for 75mm topping
- Optional Finishes: hot dip galvanised (HDG); powder coated; wet painted; stainless steel
- Supplied pre-fabricated with foundation cage, no additional re-bar required



## PAS68 STATIC BOLLARD - CR840SH



### Features

- Ultra shallow foundation of just 125mm
- 219mm or 273mm diameter bollard options
- 1000mm finish height (bespoke heights available on request)
- Static fixed and removable options
- Unique and simple chain based connection system
- Corner and other angular sections available
- Optional: stainless steel, decorative or site specific bespoke sleeves



Security Providers Licence:  
3251000

Electrical Contractor's Licence:  
86460



QBCC Licence:  
1133023



Master Builders Member:  
64928



ASIS Member:  
312860



ASIAL Member:  
37871

