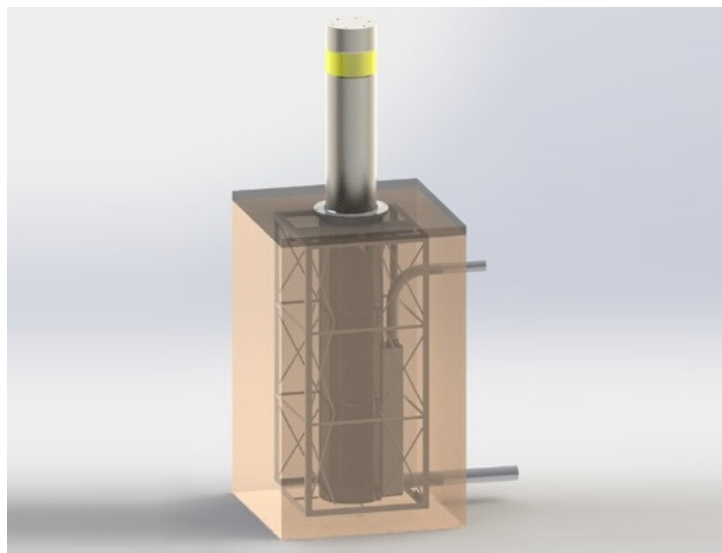




## PAS68 RETRACTABLE BOLLARD - CR850A

The CR850A provides formidable protection against vehicular attacks. This provides superior protection than all bollards tested with the smaller N2 vehicle. It was fully tested with the N3 7,500kg vehicle travelling at 80kph. As with all our rising bollards this was tested as a single unit with a single foundation and is supplied complete with integral re-bar pre-attached to the bollard making installation very easy. The CR850A offers the ultimate in facility protection from a vehicular based attack (refer to Technical Specifications).

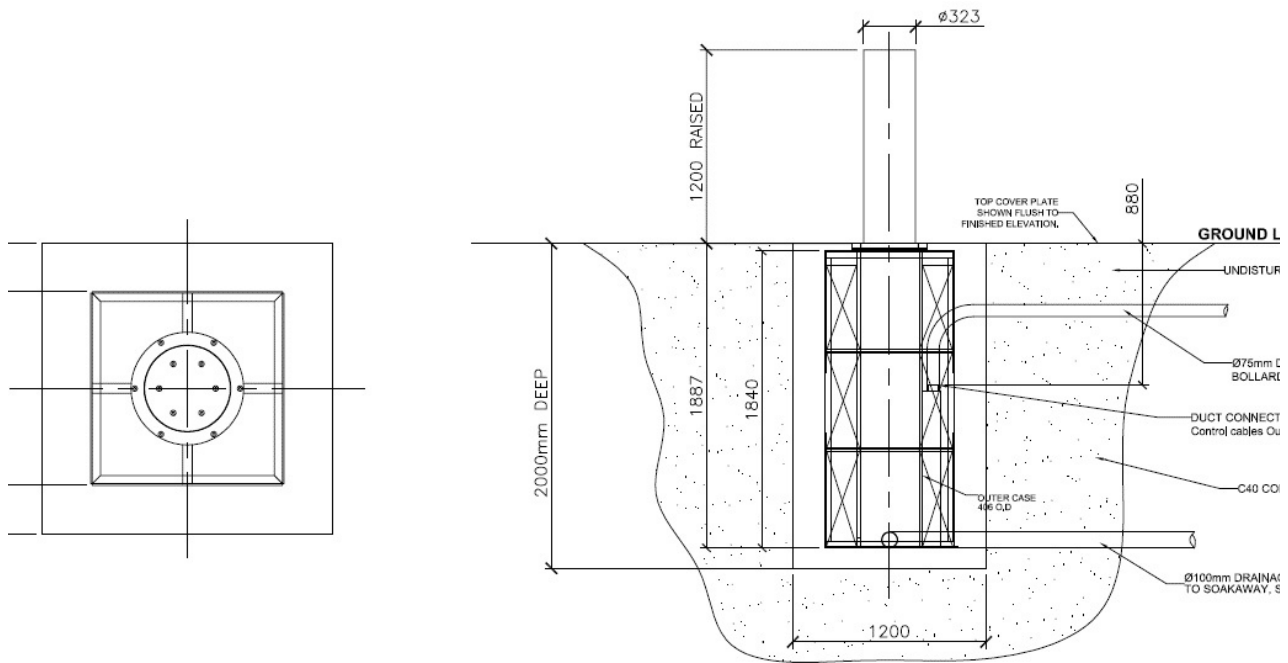


### Technical Specifications

- PAS68: V7500[N3]/80/90:5.9/7.0
- Bollard tested as a single unit with N3 7,500kg vehicle at 80kph
- Diameter: 323mm
- Height: 1200mm above FFL
- Foundation: 2000mm
- Optional Finishes: hot dip galvanised (HDG); powder coated; wet painted; stainless steel
- Operation: automated, can be used as a manual system or hand-pump
- Raise Speed: 8 seconds standard, optional EFO (Emergency Fast Operation)



## PAS68 RETRACTABLE BOLLARD - CR850A



### Features

- Impact tested as single unit in a single foundation
- Impressive and imposing 1200mm raise height above ground
- Optional stainless steel sleeve can be designed to your specific requirements
- Can be supplied with LPS SR2 or LPS SR4 security cabinets if required
- Raises and lowers in circa 8-10 seconds
- 100% duty cycle
- Supplied with integral re-bar making installation simple and quick
- Supplied with high performance control board
- Works standalone or in unison with other products
- Uses 3 phase power at 10amp
- Continues to work after impact
- Can withstand multiple attacks



Security Providers Licence:  
3251000

Electrical Contractor's Licence:  
86460



QBCC Licence:  
1133023



Master Builders Member:  
64928



ASIS Member:  
312860



ASIAL Member:  
37871



INSTALLER MEMBER

